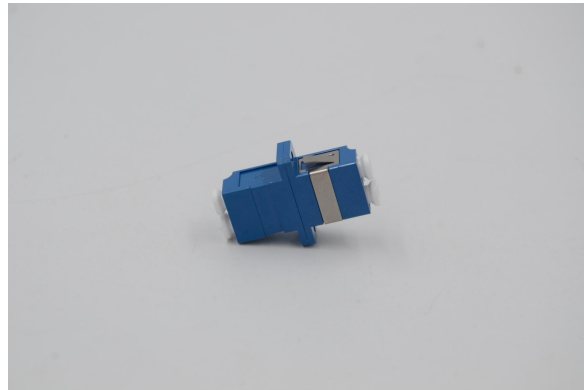


LC/UPC SM Duplex Adapter



Description

Fiber Optic Adapter is activities connection device between optical fiber and optical fiber. It accurately connect two end face of optical fiber so that Max optical energy from launch optical fiber could be coupled with received optical fiber, and make least influence, due to entering into optical link. To a certain extent, application of fiber optic adapter will affect the system of optical transmission, like reliability and each performance. Series products covering: FC. SC. ST. LC. MTRJ, widely applied into ODF, optical communication device, instruments and so on.

Feature

- Low Insertion loss
- Good Repeat ability
- Good Each Insert Performance
- Good Stable Temperature

Application

- Optical Fiber Communication System
- Optical Fiber Access Network(FTTX)
- Optical Fiber Data transmission
- Optical Fiber CATV
- LAN
- Testing Equipment

Performance Standard

Parameter	Unit	LC/UPC Duplex Adapter		
		PC	UPC	APC
Insertion Loss	dB	≤ 0.2	≤ 0.2	$\leq 0.2(0.15)$
Mechanical Ability	Degree	≥ 500	≥ 500	≥ 500
Vibration	dB	≤ 0.2	≤ 0.2	≤ 0.2
Operating Temperature	°C	-40~+75	-40~+75	-40~+75
Storage Temperature	°C	-40~+85	-40~+85	-40~+85